



INSTALLATION MANUAL

239-229-5285
info@trapbag.com

Installation Manual



STEP 1

PREP SITE

1. Clear the installation area of debris, vegetation, and sharp objects.
2. Level and compact the ground to create a smooth, stable surface for TrapBag® placement.

INSTALL THE SCOUR SKIRT

1. Roll out the 12 ft wide fabric flat on the beach.
2. Place 1 to 2 cubic feet of sand per linear foot down the center of the fabric.
3. Fold the water-side edge of the fabric back toward the land side, encapsulating the sand—similar to folding a taco.
4. Once the fabric is folded, place the TrapBags directly behind the fabric encapsulated with sand.
5. The toe of the TrapBags should rest against the sand encased within the scour skirt.



STEP 2

Need Help? Please Call (239) 229-5285

Installation Manual

PULL OUT

1. Pull the TrapBag® bundle apart like an accordion and lay it out at the desired location.
2. Ensure the sloped side faces the water/wave action in erosion scenarios and the vertical side faces the water in flood conditions.



STEP 3

PULL TIGHT & BEGIN FILLING

1. Pull the chain tight while filling the first and second-to-last cells in the first bundle to 50% capacity with granular material weighing at least 100 lbs per cubic foot (minimum 2700 lbs per cubic yard). When filling, make sure to fill multiple cells simultaneously over the coroplast partition.
 2. Leave the last cell empty until you're ready to connect the next chain OR make the connection before filling the two cells adjacent to the last one.
- Maintaining tension on the cells before filling is critical. This ensures the structure remains rigid, with the partially filled cells at each end locking the system in place for stable filling



Highlighted cells indicate specific positions in the chain that must be filled first

STEP 4

Need Help? Please Call (239) 229-5285

Installation Manual



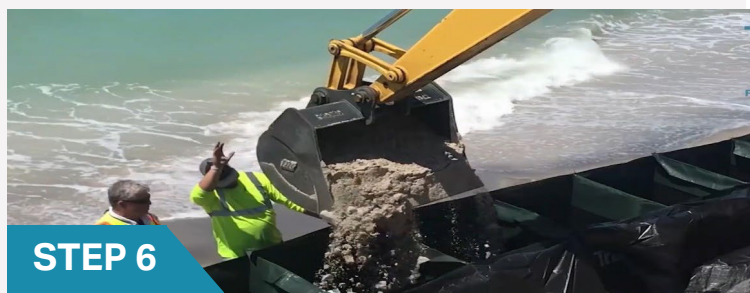
CONNECT CELLS

1. Align the next TrapBag® chain with the previous and connect them using 4' 2x4s placed inside the end cells.
2. Secure with screws inserted from both sides.
3. To assure proper anchorage, connect screws to the frame from the inside of both cells.

CONTINUE FILLING CELLS

Once connected, fill the joined cells to 50% capacity simultaneously.

- This supports internal partitions and prevents leaning from side to side or bulging into the next cell.



Need Help? Please Call (239) 229-5285

Installation Manual

HYDRAULIC COMPACTION

1. Once all of the cells are filled to 50% capacity, begin hydraulic compaction.
2. Insert the hose from a minimum 175 GPM trash pump with a 4' PVC extension into each cell and flood with at least 50 gallons of water. This displaces air and settles the material.

• *Please do not use a garden hose.*



STEP 7



STEP 8

COMPLETE FILLING

1. Top off cells to full capacity with more fill.
2. Repeat hydraulic compaction to maximize density (the goal is to achieve the most mass possible inside of the bags).
3. Once the water has drained and the material has settled, perform a final top-off to ensure full volume and structural performance.

Need Help? Please Call (239) 229-5285

Installation Manual



ATTACH LIDS (TBRD MODEL)

1. If using TBRD models, install lids by pulling the cover over and attaching with hog rings spaced every 2 inches.
 2. Tuck any loose fabric before fastening. This prevents waves from grabbing the loose material and ripping it loose.
- Skip this step for TBR models, as they do not come with lids.



STEP 9

REPEAT

1. Repeat this process until linear footage is achieved.



STEP 10

Need Help? Please Call (239) 229-5285

Removal Instructions

REMOVAL

1. To remove the TrapBag® system, use a razor knife to cut open each cell vertically on both sides.
2. Allow the fill material to fall out. Then use an excavator to lift out the fabric.
3. The fill material can be reclaimed after all fabric is removed.



STEP 11

Need Help? Please Call (239) 229-5285

Helpful Video Resources

Please check out these videos for further installation help

- [TrapBag® Installation Overview](#)
- [TrapBag® Fill and Compaction Process](#)
- [Hog Ring Gun Demonstration](#)

Need Help? Please Call (239) 229-5285

